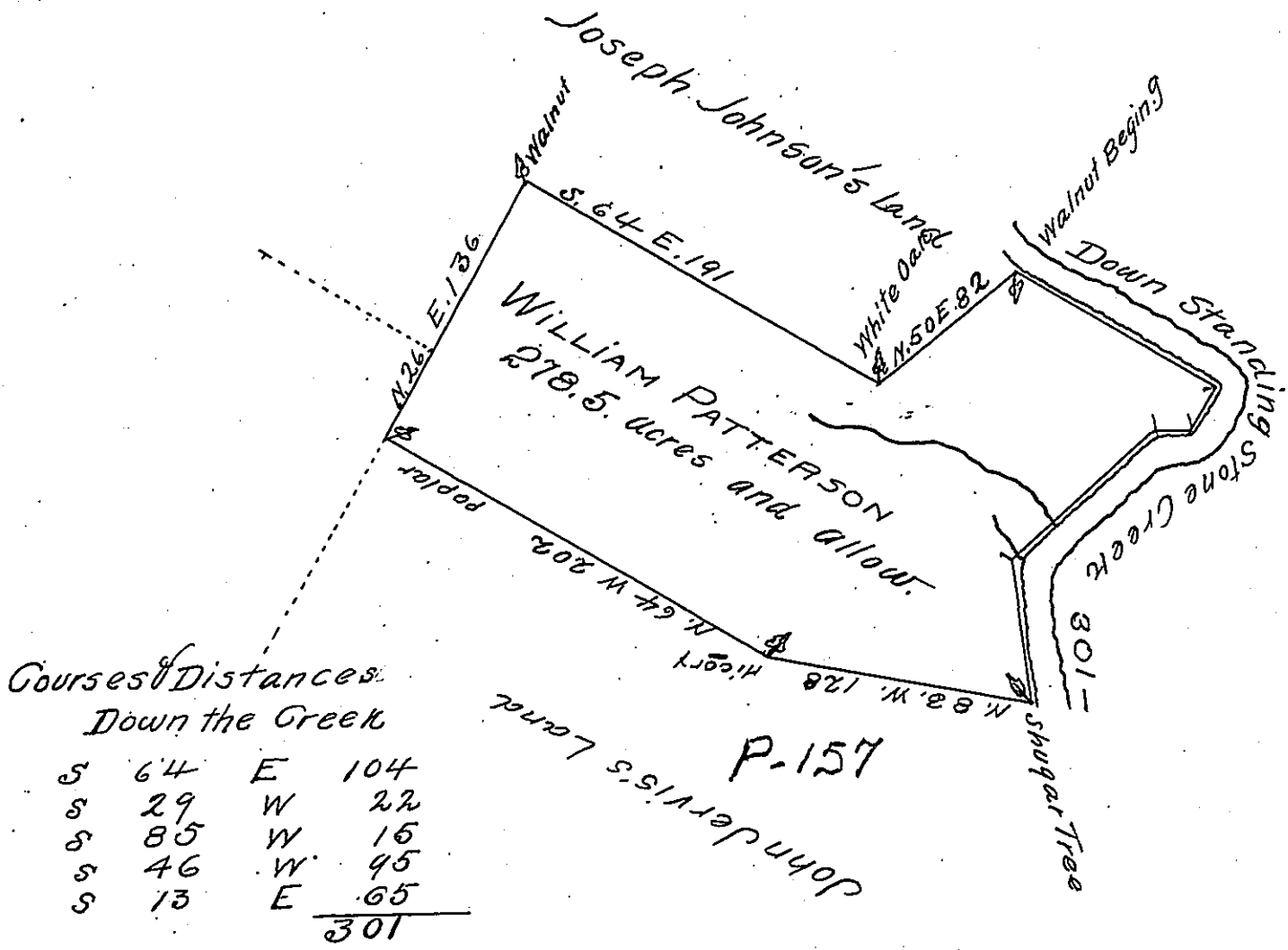


C-42-189



Courses & Distances
Down the Creek

S	64	E	104
S	29	W	22
S	85	W	15
S	46	W	95
S	13	E	65
			<u>301</u>

P-157

The Draught of a Tract of Land called Walnut Bottom.

Situate on Standing Stone Creek in the County of Cumberland containing Two hundred Seventy eight acres and an half acre with the usual allowance of six acres p Cent for roads.

Survey'd the 21st day of November Anno Dom: 1766 in pursuance of an order of survey to William Patterson bearing date at Philad^a the 23^d day of September Anno Dom: 1766 and numbered 1337

W^m Maclay D.S.

To John Lukens Esq^r S.G.
of Pennsylvania

IN TESTIMONY that the above is a copy of the original remaining on file in the Department of Internal Affairs of Pennsylvania, made conformably to an Act of Assembly approved the 16th day of February, 1833, I have hereunto set my Hand and caused the Seal of said Department to be affixed at Harrisburg, this twelfth day of December 1905

James R. Brown
Secretary of Internal Affairs.